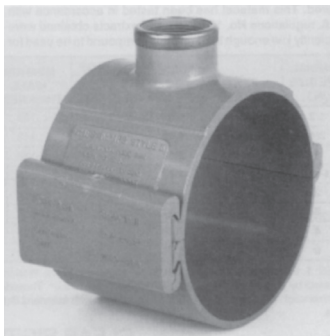


## Clamp-It PVC Tapping Saddles



The Clamp-It Tapping saddles allow you to tap into existing piping systems without having to cut out and insert a tee. The O-ring and O-ring groove are designed so that there is no gap between the installed saddle and the pipe. When pressure is applied the pipe compression is replaced by the fluid pressure without increasing the pressure on the saddle. The hinge design eliminates the need for two clamping wedges. The clamping wedge equally distributes the pressure over the entire width of the saddle. It locks and aligns the saddle top and bottom into proper position.

### Applications

- Variable grade pressure sewer systems
- Pressure water systems
- Golf club irrigation
- Mobile home parks

IPS SLIP					
	3/4" TAP	1" TAP	1 1/4" TAP	1 1/2" TAP	2" TAP
SIZE	PART NO.	PART NO.	PART NO.	PART NO.	PART NO.
2"	432007	432010	432012	432015	
2 1/2"	432507	432510	432512	432515	432520
3"	453007	453010	453012	453015	453020
4"	454007	454010	454012	454015	454020
6"	456007	456010	456012	456015	456020
8"	458007	458010	458012	458015	458020

IPS FIPT					
	3/4" TAP	1" TAP	1 1/4" TAP	1 1/2" TAP	2" TAP
SIZE	PART NO.	PART NO.	PART NO.	PART NO.	PART NO.
2"	422007	422010	422012	422015	
2 1/2"	422507	422510	422512	422515	422520
3"	443007	443010	443012	443015	443020
4"	444007	444010	444012	444015	444020
6"	446007	446010	446012	446015	446020
8"	448007	448010	448012	448015	448020

### Notes:

- Meets ASTM D-1784 cell classification 12454B and ASTM D-2241; D-2466 and 1599 for dimensions and testing performance.

## PVC & CPVC S80 Expansion Joints



These expansion joints are fabricated from either PVC or CPVC and are available for Iron pipe sizes from 1/2" to as high as 12". They contain multi O-ring Viton® Seals with "Wiper" O-ring and requires no repair or replacement.

6" TRAVEL EXPANSION JOINTS			
SIZE	PSI RATING @ 73°F	PVC	CPVC
		PART NUMBER	PART NUMBER
1/2	340	826-005X6	526-005X6
3/4	340	826-007X6	526-007X6
1	320	826-010X6	526-010X6
1 1/4	260	826-012X6	526-012X6
1 1/2	240	826-015X6	526-015X6
2	200	826-020X6	526-020X6
2 1/2	190	826-025X6	526-025X6
3	190	826-030X6	526-030X6
4	160	826-040X6	526-040X6
6	130	826-060X6	526-060X6
8	120	826-080X6	526-080X6
10	110	826-100X6	526-100X6
12	100	826-120X6	TB2150ST

12" TRAVEL EXPANSION JOINTS			
SIZE	PSI RATING @ 73°F	PVC	CPVC
		PART NUMBER	PART NUMBER
1/2	340	826-005X12	526-005X12
3/4	340	826-007X12	526-007X12
1	320	826-010X12	526-010X12
1 1/4	260	826-012X12	526-012X12
1 1/2	240	826-015X12	526-015X12
2	200	826-020X12	526-020X12
2 1/2	190	826-025X12	526-025X12
3	190	826-030X12	526-030X12
4	160	826-040X12	526-040X12
6	130	826-060X12	526-060X12
8	120	826-080X12	526-080X12
10	110	826-100X12	526-100X12
12	100	826-120X12	TB2150ST